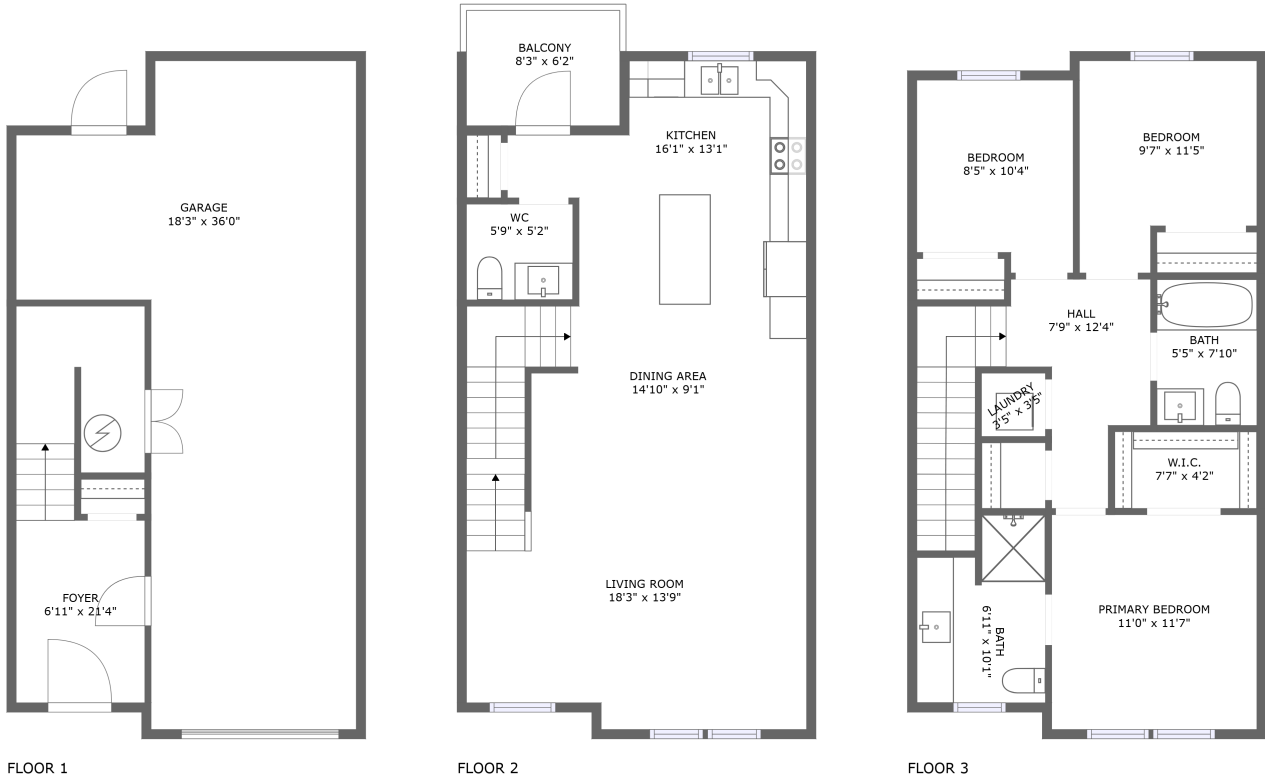



2360 Crescent Way, Mill Lake, Abbotsford, Fraser Valley Regional District, British Columbia, Canada,



Property summary


 **1** Garages

 **3** Bedrooms

 **2** Bathrooms

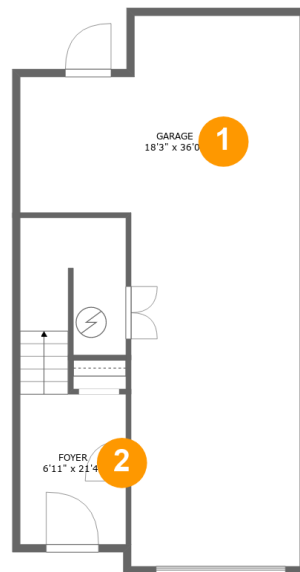
 **1** Half baths

 **3** Floors

 **1,489** Gross living area sqft

 **2,085** Total sqft

2360 Crescent Way, Mill Lake, Abbotsford, Fraser Valley Regional District, British Columbia, Canada,



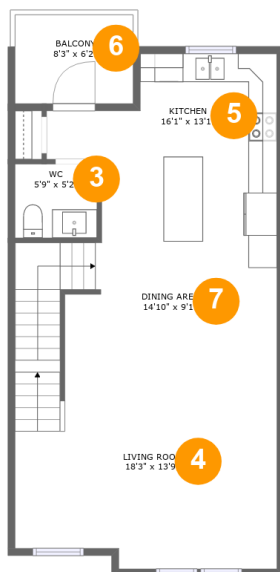
Room dimensions

Floor 1

Total sqft: 672 Living area: 164

#		Dimensions	sqft	Counted as living area
1	Garage	18'3" x 36'0"	460 sq. ft	No
2	Foyer	6'11" x 21'4"	136 sq. ft	Yes

2360 Crescent Way, Mill Lake, Abbotsford, Fraser Valley Regional District, British Columbia, Canada,



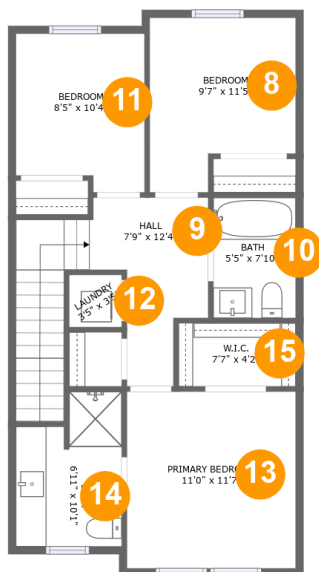
Room dimensions

Floor 2

Total sqft: 720 Living area: 669

#		Dimensions	sqft	Counted as living area
3	WC	5'9" x 5'2"	29 sq. ft	Yes
4	Living Room	18'3" x 13'9"	240 sq. ft	Yes
5	Kitchen	16'1" x 13'1"	163 sq. ft	Yes
6	Balcony	8'3" x 6'2"	51 sq. ft	No
7	Dining Area	14'10" x 9'1"	164 sq. ft	Yes

2360 Crescent Way, Mill Lake, Abbotsford, Fraser Valley Regional District, British Columbia, Canada,



Room dimensions

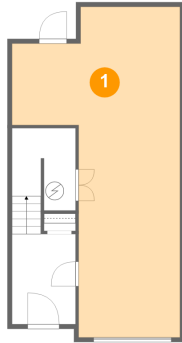
Floor 3

Total sqft: 693 Living area: 656

#		Dimensions	sqft	Counted as living area
8	Bedroom	9'7" x 11'5"	94 sq. ft	Yes
9	Hall	7'9" x 12'4"	113 sq. ft	Yes
10	Bath	5'5" x 7'10"	42 sq. ft	Yes
11	Bedroom	8'5" x 10'4"	82 sq. ft	Yes
12	Laundry	3'5" x 3'5"	12 sq. ft	Yes
13	Primary Bedroom	11'0" x 11'7"	127 sq. ft	Yes
14	Bath	6'11" x 10'1"	61 sq. ft	Yes
15	W.I.C.	7'7" x 4'2"	32 sq. ft	Yes

2360 Crescent Way, Mill Lake, Abbotsford, Fraser Valley Regional District, British Columbia, Canada,

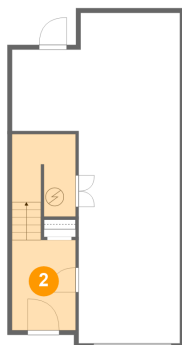
1 Floor 1 - Garage



Dimensions: 18'3" x 36'0"
Area: 460 sq. ft
Counted as living area: No

Heated: No
Finished: No
Enclosed: Yes
Contiguous: Yes
Permitted: Yes
Wet space: No
Addition: No
Conversion: No

2 Floor 1 - Foyer



Dimensions: 6'11" x 21'4"
Area: 136 sq. ft
Counted as living area: Yes

Heated: Yes
Finished: Yes
Enclosed: Yes
Contiguous: Yes
Permitted: Yes
Wet space: No
Addition: No
Conversion: No

2360 Crescent Way, Mill Lake, Abbotsford, Fraser Valley Regional District, British Columbia, Canada,

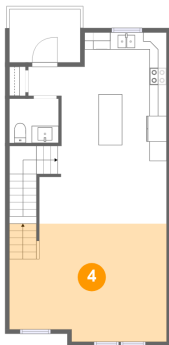
3 Floor 2 - WC



Dimensions: 5'9" x 5'2"
Area: 29 sq. ft
Counted as living area: Yes

Heated: Yes
Finished: Yes
Enclosed: Yes
Contiguous: Yes
Permitted: Yes
Wet space: Yes
Addition: No
Conversion: No

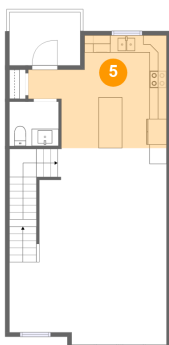
4 Floor 2 - Living Room



Dimensions: 18'3" x 13'9"
Area: 240 sq. ft
Counted as living area: Yes

Heated: Yes
Finished: Yes
Enclosed: Yes
Contiguous: Yes
Permitted: Yes
Wet space: No
Addition: No
Conversion: No

5 Floor 2 - Kitchen

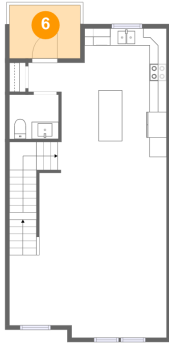


Dimensions: 16'1" x 13'1"
Area: 163 sq. ft
Counted as living area: Yes

Heated: Yes
Finished: Yes
Enclosed: Yes
Contiguous: Yes
Permitted: Yes
Wet space: No
Addition: No
Conversion: No

2360 Crescent Way, Mill Lake, Abbotsford, Fraser Valley Regional District, British Columbia, Canada,

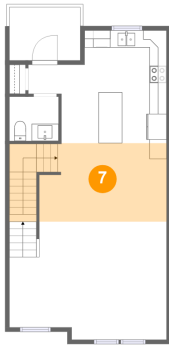
6 Floor 2 - Balcony



Dimensions: 8'3" x 6'2"
Area: 51 sq. ft
Counted as living area: No

Heated: No
Finished: Yes
Enclosed: No
Contiguous: Yes
Permitted: Yes
Wet space: No
Addition: No
Conversion: No

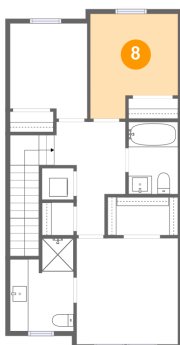
7 Floor 2 - Dining Area



Dimensions: 14'10" x 9'1"
Area: 164 sq. ft
Counted as living area: Yes

Heated: Yes
Finished: Yes
Enclosed: Yes
Contiguous: Yes
Permitted: Yes
Wet space: No
Addition: No
Conversion: No

8 Floor 3 - Bedroom



Dimensions: 9'7" x 11'5"
Area: 94 sq. ft
Counted as living area: Yes

Heated: Yes
Finished: Yes
Enclosed: Yes
Contiguous: Yes
Permitted: Yes
Wet space: No
Addition: No
Conversion: No

2360 Crescent Way, Mill Lake, Abbotsford, Fraser Valley Regional District, British Columbia, Canada,

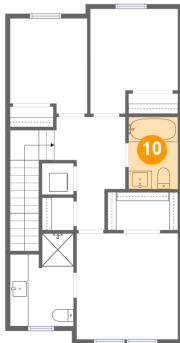
9 Floor 3 - Hall



Dimensions: 7'9" x 12'4"
Area: 113 sq. ft
Counted as living area: Yes

Heated: Yes
Finished: Yes
Enclosed: Yes
Contiguous: Yes
Permitted: Yes
Wet space: No
Addition: No
Conversion: No

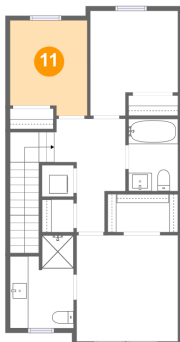
10 Floor 3 - Bath



Dimensions: 5'5" x 7'10"
Area: 42 sq. ft
Counted as living area: Yes

Heated: Yes
Finished: Yes
Enclosed: Yes
Contiguous: Yes
Permitted: Yes
Wet space: Yes
Addition: No
Conversion: No

11 Floor 3 - Bedroom



Dimensions: 8'5" x 10'4"
Area: 82 sq. ft
Counted as living area: Yes

Heated: Yes
Finished: Yes
Enclosed: Yes
Contiguous: Yes
Permitted: Yes
Wet space: No
Addition: No
Conversion: No

2360 Crescent Way, Mill Lake, Abbotsford, Fraser Valley Regional District, British Columbia, Canada,

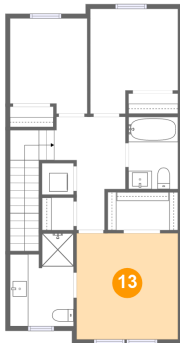
12 Floor 3 - Laundry



Dimensions: 3'5" x 3'5"
Area: 12 sq. ft
Counted as living area: Yes

Heated: Yes
Finished: Yes
Enclosed: Yes
Contiguous: Yes
Permitted: Yes
Wet space: No
Addition: No
Conversion: No

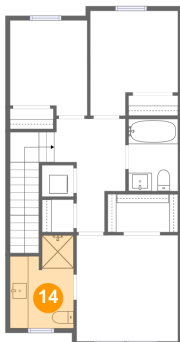
13 Floor 3 - Primary Bedroom



Dimensions: 11'0" x 11'7"
Area: 127 sq. ft
Counted as living area: Yes

Heated: Yes
Finished: Yes
Enclosed: Yes
Contiguous: Yes
Permitted: Yes
Wet space: No
Addition: No
Conversion: No

14 Floor 3 - Bath

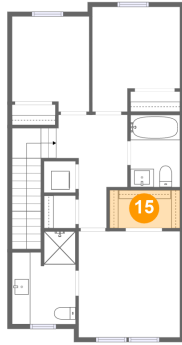


Dimensions: 6'11" x 10'1"
Area: 61 sq. ft
Counted as living area: Yes

Heated: Yes
Finished: Yes
Enclosed: Yes
Contiguous: Yes
Permitted: Yes
Wet space: Yes
Addition: No
Conversion: No

2360 Crescent Way, Mill Lake, Abbotsford, Fraser Valley Regional District, British Columbia, Canada,

15 Floor 3 - W.I.C.



Dimensions: 7'7" x 4'2"
Area: 32 sq. ft
Counted as living area: Yes

Heated: Yes
Finished: Yes
Enclosed: Yes
Contiguous: Yes
Permitted: Yes
Wet space: No
Addition: No
Conversion: No